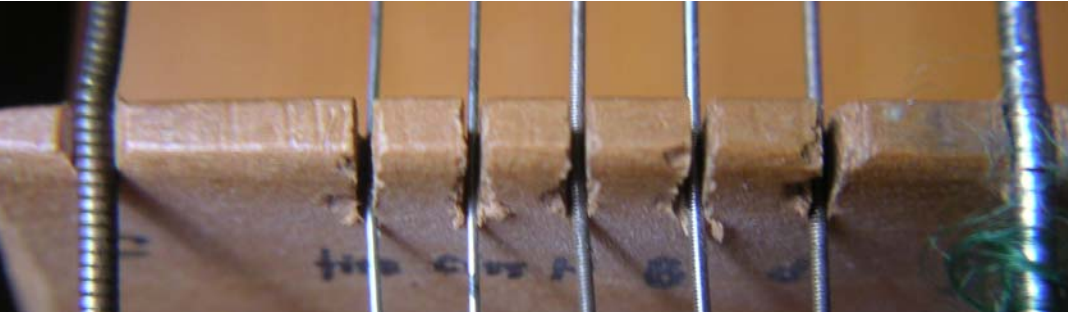


Ø 1,17 0,37 0,37 0,55 0,55 0,55 1,14 mm



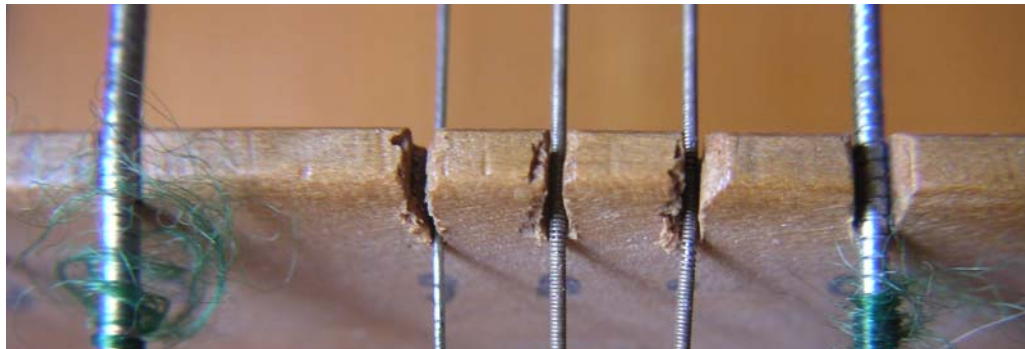
c g' (fiss') c' (ciss') ciss' (h) b d' g

Sahlströmsharpa 1960

September 2003

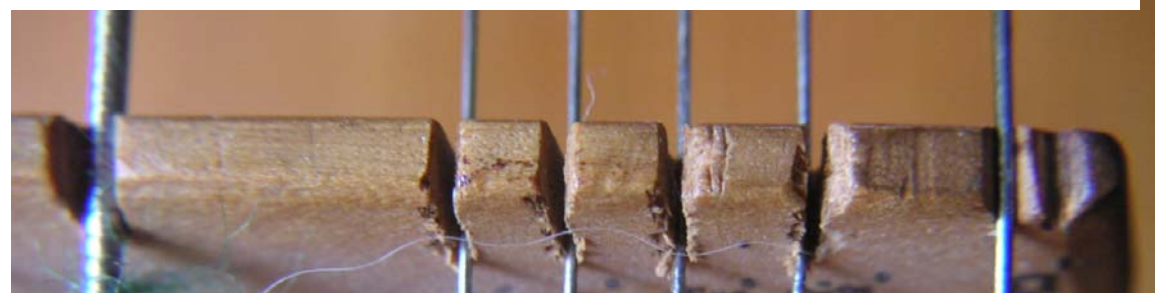
Trolig originalbesträngning		
ton	ø	nr v → h
a	0,55	7
b	0,55	4
h	0,55	3
c'	0,55	8
ciss'	0,55	2
d'	0,37	5
ess'	0,37	11
e'	0,37	10
f'	0,37	9
fiss'	0,37	1
g'	0,37	6
giss'	0,37	12

Ø 1.14 0.37 0.55 0.55 0.97 mm



g a (g') h (a) fiss' (c') c'

Ø 0,97 0,37 0,37 0,37 0,37 0,50 mm



c' f' e' ess' giss' a'

Resonanssträngar

Ursprunglig placering inom ()

7 st 0.37 ospunnen
5 st 0.55 bronsspunnen